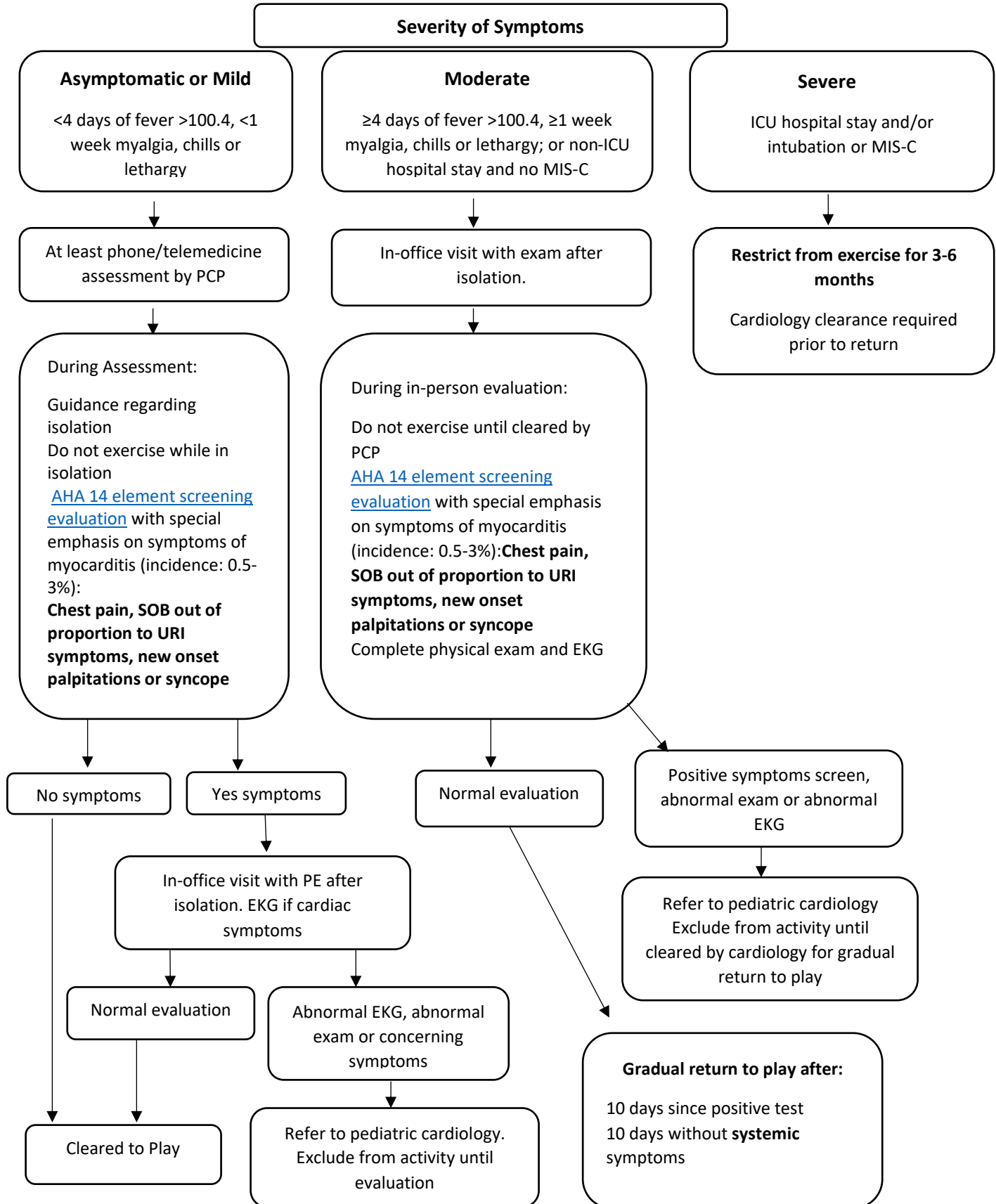


Pediatric Return to Play after COVID-19 Algorithm (January 2022)

*This evaluation to occur ≥ 10 days after positive test or symptom onset. For return to competitive sports in children ≥12 years.
Does not apply to physical education/recess unless moderate or severe symptoms were present*



*If cardiac symptoms develop after return, stop and seek re-evaluation. Link to [AHA screening questions](#)